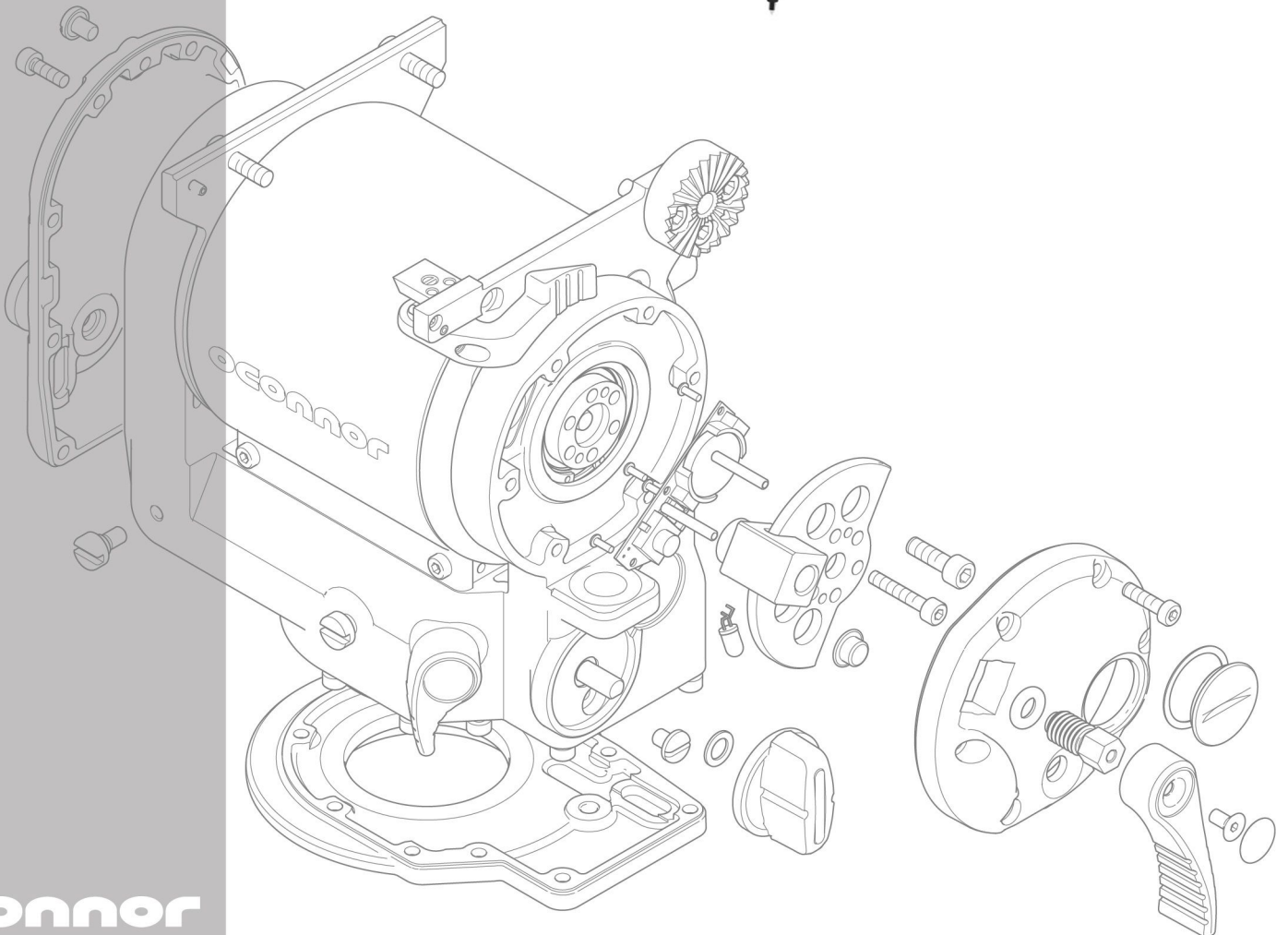


Illustrated Parts List

Cine HD Tripod (Mitchell) C1221-0001



Original Instructions: English

Publication No. C1221-0001-800/1

Copyright © 2011

All rights reserved throughout the world. No part of this document may be stored in a retrieval system, transmitted, copied or reproduced in any way, including, but not limited to, photocopy, photograph, magnetic or other record without the prior agreement and permission in writing of the Vitec Group plc.

Disclaimer

The information contained in this manual is believed to be correct at the time of printing. Vitec Videocom Limited reserves the right to make changes to the information contained in this book, product design, functionality and specifications without obligation to notify any person of such revision or changes. Changes will be incorporated in new versions of this publication.

Trademarks

All product trademarks and registered trademarks are the property of the Vitec Group Plc.

All other trademarks and registered trademarks are the property of their respective companies.

Published by:

Vitec Videocom Limited
Supports Technical Publications Department
William Vinten Building, Western Way
Bury St Edmunds, Suffolk IP33 3TB

Email: technical.publications@vitecgroup.com

ILLUSTRATED PARTS LIST

About this book

Use this book to identify spare parts for the product. Always select the version of this book that corresponds to the serial number of the product.

The printed version of this book may not be the current version. Always check online for the latest version of this book.

Exploded drawings are used to identify individual parts. The number of each part on the drawing is referenced in the standard parts list as the Item Number. Torque settings and consumables are also shown on the drawing.



This book should not be used to disassemble, maintain or repair the product. Refer all servicing to qualified and trained service engineers.

Individual parts that are only available in a Spares kit are identified in the Standard Parts List as **not sold separately** (NSS).

About spare parts

IMPORTANT NOTE:



Some individual parts are often only available in spares kits and may not be for individual sale.

All parts are shown on the exploded drawings with an item number that is referenced in the accompanying standard parts list. Not all parts are available individually as spares parts and some parts are only available in kits. Refer to the Spares Kits section of this book for all spares kits available for this product.

Always quote the individual part number or the number of the spares kit when ordering spare parts. Do not use the item number shown on the exploded drawing and referenced in the accompanying standard parts list.

Consumables

Consumables are not available for sale and must be sourced locally due to restrictions on the transportation of these substances.

Consumables used in the assembly of the product are shown on the illustrations next to the part requiring the adhesive or lubricant. Consumables are listed in the standard parts list with the part number **CON**.

Product enhancements

Product enhancements that affect a part used in the production of the product are released on Electronic Change Notifications (ECNs). Enhancements requiring a change to a part that affects the product from a certain serial number onward are listed in the Design Improvements section of this book.

Explanatory notes

Product changes to spares kits and standard parts used for a period of time and then discontinued or changed due to product enhancements, are indicated by a commencing/finishing product serial number, for example: 0000/0999, 1000/1500.

Parts still used in the current production of the product are indicated by the commencing serial number followed by an oblique stroke and dash: 0000/-, 0999/-, 1500/-.

ILLUSTRATED PARTS LIST

Document History

Issue	Details/Changes	Page/s	Issue Date
	Initial release		2012-09-21

Design Improvements

Part Affected	ECN Class 1	Details	Date	From Serial No.
			--	

ILLUSTRATED PARTS LIST

Abbreviations

Abbreviation	Meaning
A	Ampere
A/R	as required
assy	assembly
csk	countersunk
c/w	complete with
dia.	diameter
ft	foot
Hex	hexagon
ID	inside diameter
in.	inch
kg	kilogram
lb	pound
LH	left hand
mm	millimetres
No.	number
PCD	pitch circle diameter
PCS	piece
NI	Not illustrated
NSS	Not sold separately
rad	radius
REQD	required
RH	right hand
st. st.	stainless steel
STD	standard
TOL	Tolerance

Contents

HD Tripod Assembly	4
Leg Assembly.....	6

Symbols

Lubricant



Adhesive



Torque setting



Spares kit available to end users.



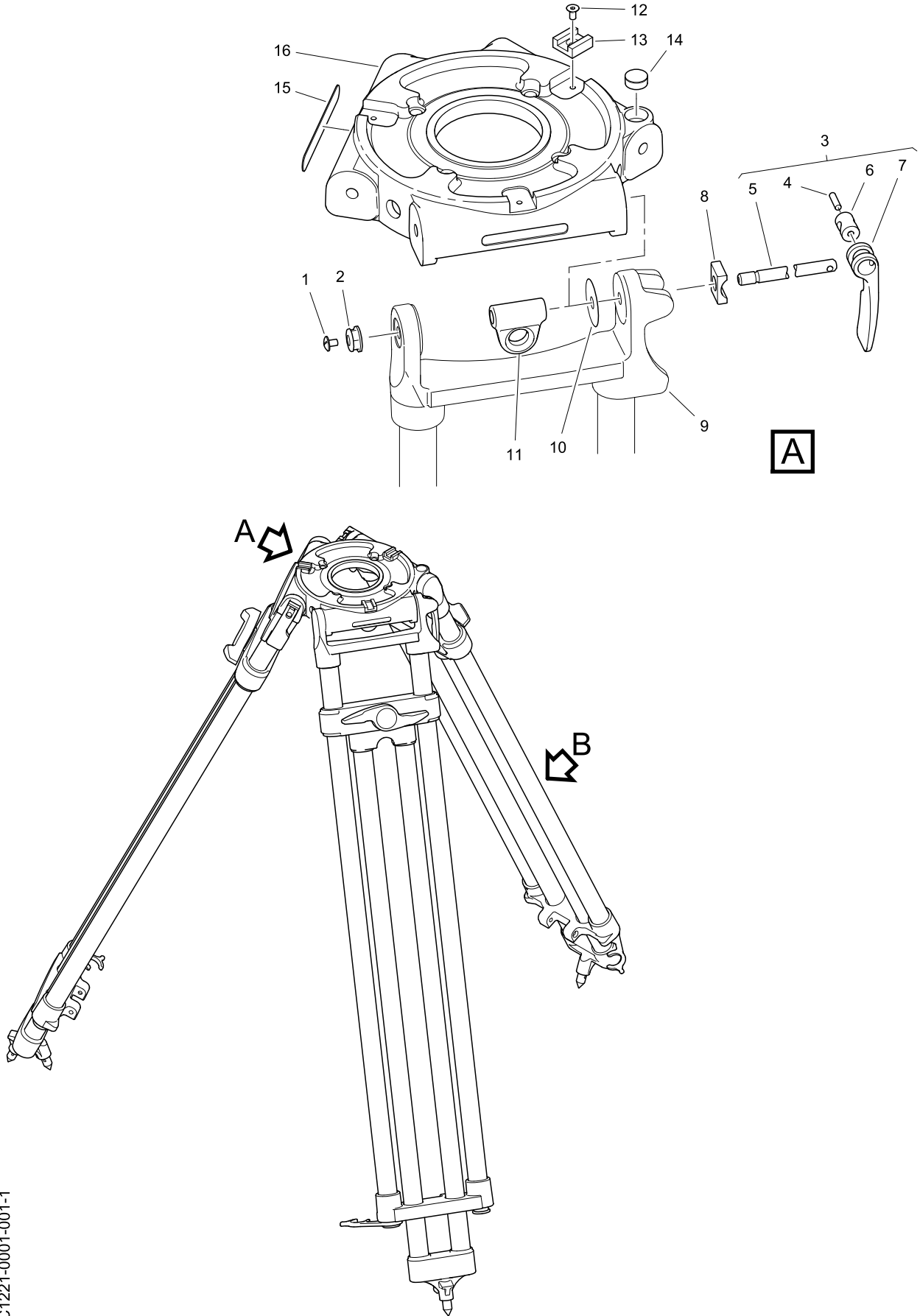
Fitting instructions available.



Spares kit only available to Service Centres.

Standard Parts List

Fig 1.0 HD Tripod Assembly



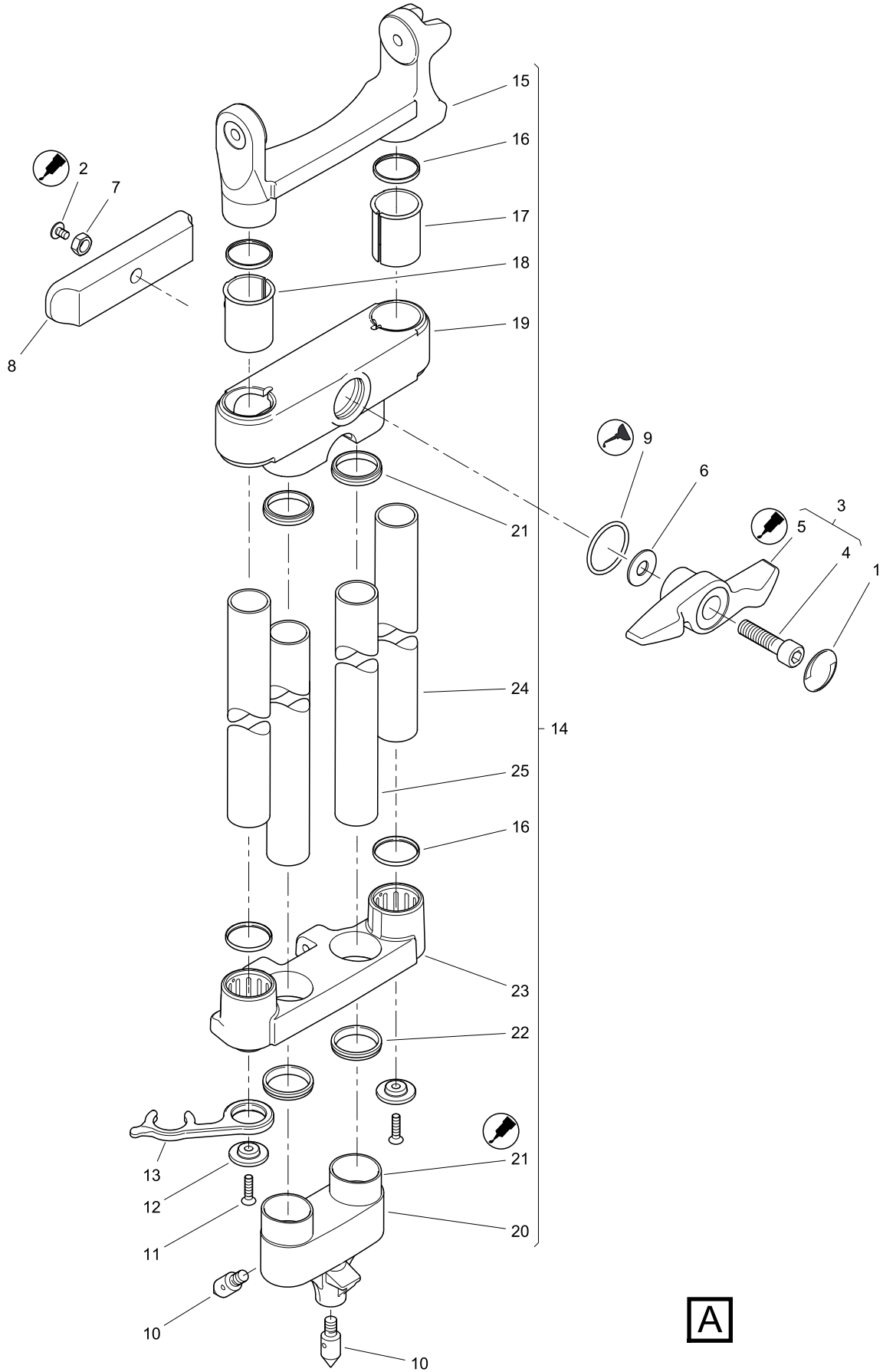
C1221-0001-001-1

Standard Parts List

Item	Part No.	Part Name	Technical Data	Serial No.	Kit Number	Qty	Unit
HD Tripod Assembly							
Fig 1.0							
1	04525	Screw, slotted truss head	8-32 x 1/4 in. long, stainless steel	00000/-		3	PCS
2	C1221-2034	Leg axle nut		00000/-		3	PCS
3	C1221-1010	Axle lever assembly		00000/-		3	PCS
4	M801-005	Dowel pin	4 mm dia. x 16 mm long	00000/-		1	PCS
5	C1221-2030	Leg axle shaft		00000/-		1	PCS
6	C1221-2031	Axle lever insert		00000/-		1	PCS
7	C1221-2032	Lever		00000/-		1	PCS
8	C1221-2033	Lever bushing, HD tripod		00000/-		3	PCS
9	C1221-1003	Leg assembly		00000/-		3	PCS
10	04527	Washer, brass	1.250 in. x 0.320 in. x 0.007 in. thick	00000/-		3	PCS
11	C1221-2036	Tiedown loop		00000/-		3	PCS
12	M005-920	Screw, countersunk head, socket	M4 x 8 mm long, stainless steel	00000/-		3	PCS
13	C1221-2011	Mitchell key insert		00000/-		3	PCS
14	3322-263	Level bubble		00000/-		1	PCS
15	08952	Logo nameplate		00000/-		3	PCS
16	C1221-2010	Top casting, Mitchell, machined		00000/-		1	PCS
NI	C1221-4980	User manual, cine head		00000/-		1	PCS

Standard Parts List

Fig 2.0 Leg Assembly



C:1221-0001-002-1

Standard Parts List

Item	Part No.	Part Name	Technical Data	Serial No.	Kit Number	Qty	Unit
Leg Assembly							
Fig 2.0							
1	C1221-2003	Label, leg lock knob		00000/-		1	PCS
2	M006-551	Screw, flanged, button head, socket	M5 x 8mm long, black e cote polyseal	00000/-		1	PCS
NI	CON	Adhesive	Loctite #222	00000/-			
3	C1221-1006	Leg lock knob assembly		00000/-		1	PCS
4	C1221-2006	Stud, lock knob		00000/-		1	PCS
5	C1221-2005	Leg lock knob, machined		00000/-		1	PCS
NI	CON	Adhesive, high strength	Loctite 271, high strength	00000/-			
6	C1221-2027	Bushing		00000/-		1	PCS
7	3902-285	Nut, brass		00000/-		1	PCS
8	C1221-2053	Leg lock clamp plate		00000/-		1	PCS
9	R900H144	O-ring	29 mm ID x 2.5 mm section	00000/-		1	PCS
NI	CON	Lubricant	Synco, #71160 super lube high temp grease with PTFE	00000/-			
10	C1221-2023	Point		00000/-		2	PCS
11	M101-009	Screw, self-tapping, countersunk head	M5 x 20 mm long	00000/-		2	PCS
12	3902-270	Retainer, leg clip		00000/-		2	PCS
13	3902-269	Leg clip		00000/-		2	PCS
14	C1221-1002	Leg glue assembly		00000/-		1	PCS
15	C1221-2022	Upper leg bracket, machined		00000/-		1	PCS
16	3902-229	Seal ring, large tube		00000/-		4	PCS
17	3902-215	Clamp sleeve, upper, RH		00000/-		1	PCS
18	3902-216	Clamp sleeve, upper, LH		00000/-		1	PCS
19	3902-202	Upper clamp housing		00000/-		1	PCS
20	C1221-2020	Foot, machined		00000/-		1	PCS
21	P001-027	Bearing	30 mm ID x 34 mm OD x 20 mm long	00000/-		2	PCS
NI	CON	Adhesive, instant bond	Loctite 480 Prism	00000/-			
22	3902-231	Seal/buffer, large tube		00000/-		4	PCS
23	3902-203	Guide casting, machined		00000/-		1	PCS
24	C1221-2015	Leg tube, upper		00000/-		2	PCS
25	C1221-2016	Leg tube, lower		00000/-		2	PCS

Cine HD Tripod (Mitchell) C1221-0001

HEADQUARTERS

2701 N. Ontario St.
Burbank, CA 91504
USA
Tel: +1 818 847 8666
Fax: +1 818 847 1205

USA

709 Executive Blvd
Valley Cottage
New York 10989
USA
Tel: +1 845 268 0100
Fax: +1 845 268 9324

UK

William Vinten Building
Western Way
Bury St Edmunds
Suffolk IP33 3TB
Tel: +44 1284 776 700
Fax: +44 1284 750 560

BRAZIL

Rua Quintana, 950 – cj.32
Brooklin
São Paulo, 04569-011
Brazil
Tel: +55 11 5102 4001
Fax: +55 11 5103 1164

CHINA

Room 706, Tower B
Derun Building
YongAn Dongli A No. 8
Jianwai Ave., Chaoyang District
100022 Beijing, China
Tel: +86 10 8528 8748
Fax: +86 10 8528 8749

FRANCE

171 Avenue des Grésillons
92635 Gennevilliers CEDEX
France
Tel: +33 8 20 82 13 36
Fax: +33 8 25 82 61 81

GERMANY

Erfurter Straße 16
85386 Eching
Germany
Tel: +49 89 321 58 200
Fax: +49 89 321 58 227
Gebäude 16
Planiger Straße 34
55543 Bad Kreuznach
Germany
Tel: +49 671 483 43 30
Fax: +49 671 483 43 50

JAPAN

P.A. Building 4F
3-12-6 Aobadai
Meguro-ku
Tokyo 153-0042
Japan
Tel: +81 3 5457 1381
Fax: +81 3 5457 1382

SINGAPORE

6 New Industrial Road
#02-02 Hoe Huat Industrial Building
Singapore 536199
Tel: +65 629 757 76
Fax: +65 629 757 78